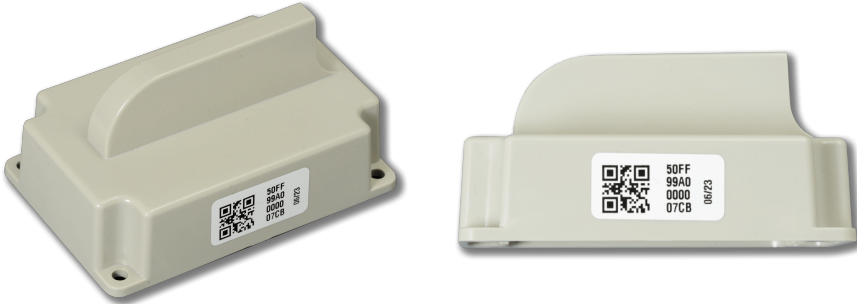


Beacon L

Art. no.:
22003305



- Up to 8 year battery life
- IP65 housing



Beacon L

The IPS Beacon L is an active transponder, which was developed for the localization of objects. With IP65 protection class, the sender can be screwed to any asset and transmits its ID at a configurable time interval. This signal is detected by an IPS receiver and forwarded to the RTLS middleware IoT-Engine. The range can be configured up to 100 m (with a good mounting position of the receiver).

Thanks to the use of state-of-the-art radio chips in combination with our power-optimized firmware, a beacon can be operated for between 5 and 8 years with one charge of batteries, depending on the settings. So after the first installation only a minimum of maintenance is necessary.

Using IEEE 802.15.4 and not Bluetooth LE as the foundation has the advantage that you can select a single radio channel where the beacons are sending and thus avoid any problems with your existing WiFi or other wireless infrastructure.



Beacon L

Art. no.:
22003305



Technical Specification

Operating Principle	IEEE 802.15.4 Indoor Positioning Beacon
Operating Frequency	2.45 GHz ISM band
Output Power	max. 4 dBm
Channels	11 - 26 supported (configurable)
Read Range	up to 100 m (configurable)
Operating Voltage	3x AAA Battery (5+ years battery life)
Ingress Protection	IP65
Dimensions	90 x 60 x 45 mm
Certifications	CE (eg. ETSI EN 300 440)

About Metrateg

Metrateg develops, produces and sells Radio electronics for the areas of "Identification", "Localization", and "Communication" and thus serves a variety of markets with standard products as well special solutions. Customers include OEM customers, system integrators and research facilities worldwide.

